

How It Works
Patent #6,721,967

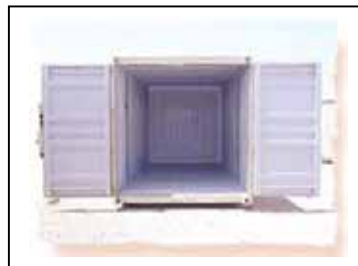
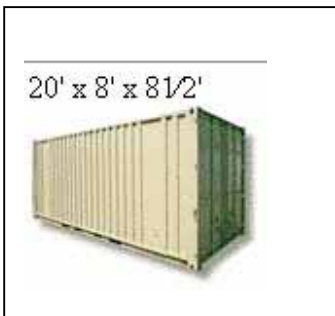


Holding Tank

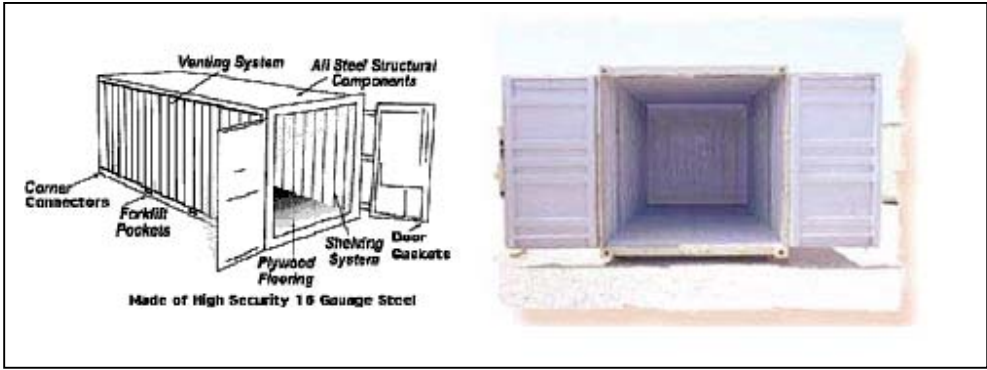
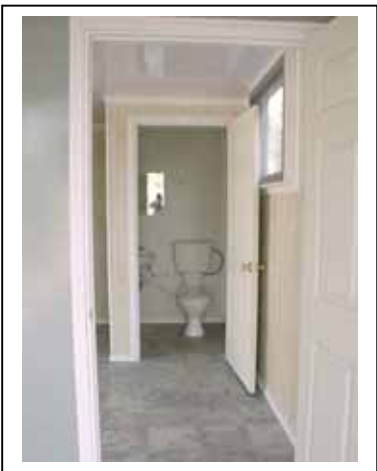
Specifications AIO 208s:

- Electrical Service 50 Amps
- Overhead Light
- Two Outlets
- Divider Wall/Door
- One Add-A-Bathroom with Enclosure
- Carpeting or Linoleum
- Holding Tank
- Patent #6,721,967
- Options Requested but Not Quoted

Window Without Security Bars \$560.00 Security Bars \$188.00 on Window Steel Security Door \$940.50 In Line Hot Water Heater \$510.00



Toilets.com, Inc.
 Phone: 1-800-521-6310 Fax: 1-800-437-9220
 E-mail: info@toilets.com Web Site www.toilets.com



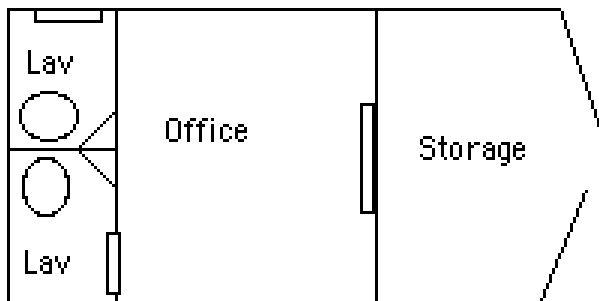
Toilets.com, Inc.
Phone: 1-800-521-6310 Fax: 1-800-437-9220
E-mail: info@toilets.com Web Site www.toilets.com

All In One Site Management Solution



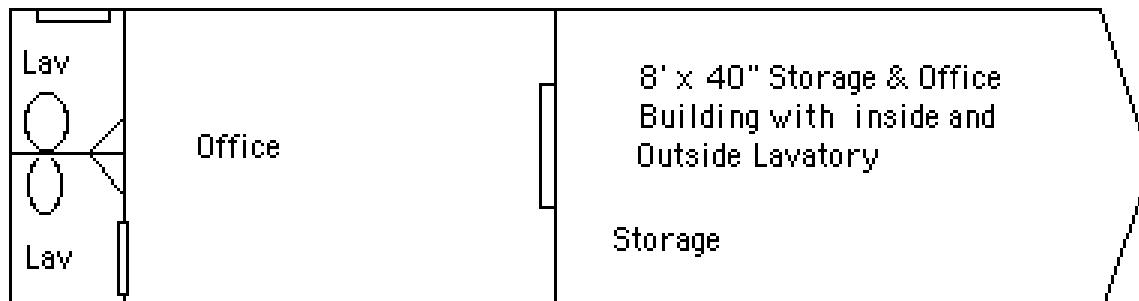
8' x 20' Storage
Inside and out side Lavatory

Patent Pending



8' x 20' Storage & Office
Inside and out side Lavatory

All Units are Ground Level Fresh Water Flush Systems



Lavatories can be plumbed to our holding tank, septic system or sewer. Water source can be a garden hose or water tank.