



Fig. 1 Bidet/Water Saver Flush



Fig. 2 Exhaust Fan/ Studor Vent



Fig. 3 Vanity - Automatic Soap/ Paper Towel - Safety Light Mirror - Smoke Detector Fire Extinguisher GFI Electrical Receptacle



Fig. 4 Water Pressure Pump in Vanity



Model 7575RTF-2WTMSS



Fig. 5 Water Saver Cistern



Fig. 6 Hitch Receiver 2' Ball Shown (removable) Pintle Hitch Included



Fig. 7 Trailer Spring and Axle Assembly (removable)



Fig. 8 Trailer Hitch Assembly (removable)

Model 7575RTF-2WTMSS Specifications

This lavatory building is mounted on a removable trailer assembly. **Model 7575RTF-2WTMSS** can be set on the ground after the trailer assembly is removed and used as a permanent lavatory.

This model utilizes a 1,200 Liter (300 Gallon) holding tank.

The size of the Lavatory Building is 7' (2.1m) wide by 5' (1.5m) deep.

The building has a .6m x 2.1m landing with a removable handrail.

The Lavatory Building walls are 5.08cm thick.

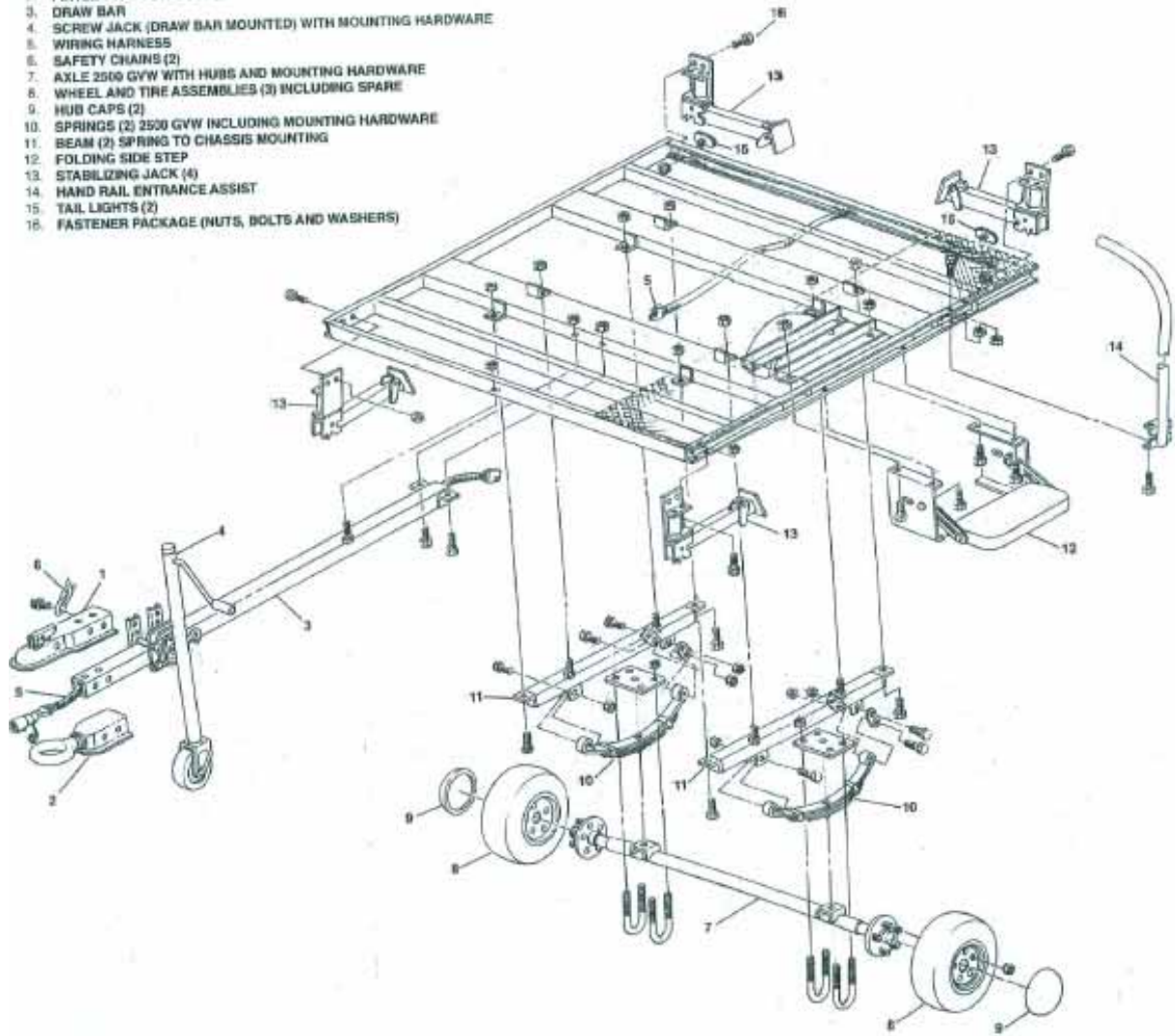
The aluminum extrusions are all powder coated and the exterior screws are covered with exterior molding.

Standard specifications of the Lavatory Building are: Smoke Detector, Fire Extinguisher, Vanity/Sink, Automatic Faucet, Vent Fan, GFI Receptacle (near Vanity/Sink), Automatic Paper Towel Dispenser, Automatic Hand Soap Dispenser, Bidet, Mirror, Pressure Pump and Ceramic Cistern and Toilet.

The safety hitch tongue is 5'8" (1.7m) long to prevent damage to the lavatory building by the towing vehicle while turning. Two types of hitch receivers are included. The 2" ball receiver is installed and a pintle hitch is packaged.

MOBILITY ACCESSORY PACKAGE

1. 2" BALL TYPE TOW COUPLER
2. PINTLE TYPE TOW COUPLER
3. DRAW BAR
4. SCREW JACK (DRAW BAR MOUNTED) WITH MOUNTING HARDWARE
5. WIRING HARNESS
6. SAFETY CHAINS (2)
7. AXLE 2500 GVW WITH HUBS AND MOUNTING HARDWARE
8. WHEEL AND TIRE ASSEMBLIES (3) INCLUDING SPARE
9. HUB CAPS (2)
10. SPRINGS (2) 2500 GVW INCLUDING MOUNTING HARDWARE
11. BEAM (2) SPRING TO CHASSIS MOUNTING
12. FOLDING SIDE STEP
13. STABILIZING JACK (4)
14. HAND RAIL ENTRANCE ASSIST
15. TAIL LIGHTS (2)
16. FASTENER PACKAGE (NUTS, BOLTS AND WASHERS)



Model 7575RTF-2WTMSS Trailer Support Specifications
Trailer Body Dimensions (2.1m) wide by (1.5m) deep.

Model 7575RTF-2WTMSS

1. Foaming Soap Reservoir
2. Pump Strainer
3. Directional Valve – Turn toward red to use with holding tank water supply and turn valve toward the blue to use with pressurized municipal water or garden hose.

ALWAYS TURN PUMP OFF AT THE ELECTRICAL CONTROL BOX WHEN MOVING THE VALVE. NEVER TURN THE PUMP ON WHEN THERE IS NO WATER CONNECTION.

4. Pump Assembly
5. Automatic Soap Dispenser Battery Pack
6. Pump Power Control Box
7. Water Shutoff Valve
8. GFI Receptacle
9. Receptacle with On and Off Pump Switch



Model 7575RTF-2WTMSS Vanity

