



Model #Dual 810m



Standard Dual Stall Men's Unit

# "When a Portable Toilet is Not an Option"

Patent #6,721,967



Re-Deployable

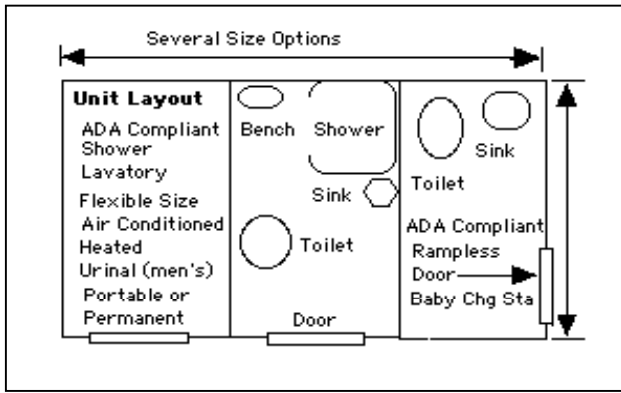


Forklift Tine Ports  
Increases Mobility  
Allows Handicapped Use  
At Ground Level

Increase Mobility

**Toilets.com, Inc.**  
 Phone: 1-800-521-6310      Fax: 1-586-731-0670  
 E-mail: [info@toilets.com](mailto:info@toilets.com)      Web Site: [www.toilets.com](http://www.toilets.com)

**No Waste Reservoir In Unit - Garden Hose or Hard Plumbed Water Source**  
 Eliminate Service Problems and Cost  
**Sewer Hookup - Septic Tank Hookup - Exterior Waste Holding Tank**  
 Super-Sized For American Roominess - Easy Redeployment - Design Flexibility  
**Re-Deployable - More Doors for Greater Customer Satisfaction**  
 All Units Can Be Temporary or Permanent  
**All Units Can Be Connected or Used as Stand-A-Lone Lavatories**  
 All Units Can Be Ground Level or Trailer Mounted  
**More Interior and Exterior Wall Space for Your Advertisements**



Three Stall Building

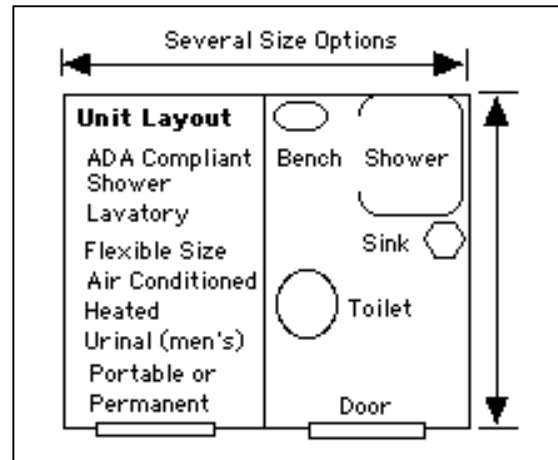


Three Stall Building With Optional ADA Stall  
Model TH 7513 ADAMF



Model HT 304

300 Gallon



**Standard Equipment:** Ceramic Fixtures - Mirrors - Towel & Soap Dispensers - Toilet Roll Holders - Waste Containers - Fresh Water Hookup (garden hose to be hard plumbed) - 4" Waste Exit with 3" Reducer - Steel Frame with Steel Encased Tine Ports for Maximum Safety & Mobility - 36" Doors

**Optional Equipment** - Air Conditioning - Heater - In-Line Water Heater - Baby Changer - ADA Stall - Holding Tanks

**Toilets.com, Inc.**

Phone: 1-800-521-6310

Fax: 1-586-731-0670

E-mail: [info@toilets.com](mailto:info@toilets.com)

Web Site: [www.toilets.com](http://www.toilets.com)



**Model TH 7513 ADAMF** Patent #6,721,967



One inch (1") thick interior and exterior walls are Polyethylene Honeycomb Material with FPR

36" Doors

**Handicapped Compliant Stall**



Steel Frame



Steel Frame Under-Section

Contact:

Earl Braxton

E-Mail: [info@toilets.com](mailto:info@toilets.com)  
for Additional Information

The steel frame allows the unit to be moved with a forklift via the tine ports. The frame also allows the unit to be mounted on any trailer chassis, if desired.

**Toilets.com, Inc.**

**Comfort Station Components**

Phone USA: 800-521-6310 FAX: 586-731-0670

E-Mail: [info@toilets.com](mailto:info@toilets.com)

Web Page: <http://www.toilets.com>

**Ground Level - Fresh Water Flush System**

Patent #6,721,967