

How It Works  
Patent #6,721,967



Holding Tank

# All In One

### Specifications AIO 208s:

- Electrical Service 50 Amps
- Overhead Light
- Up To Two Outlets
- Divider Wall/Door
- One Add-A-Bathroom with Enclosure
- Linoleum
- Holding Tank

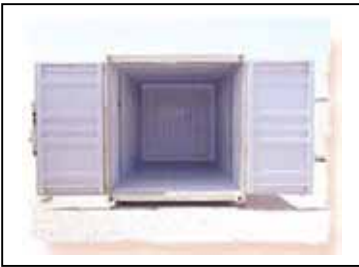
Price Quote: Requires Customer Specifications  
**Patent #6,721,967**

#### Options

- Window Without Security Bars
- Steel Security Door
- Security Bars on Window
- In Line Hot Water Heater
- Shower Option



Many Floor Plans



Rear Door Option



Add A Bath Option

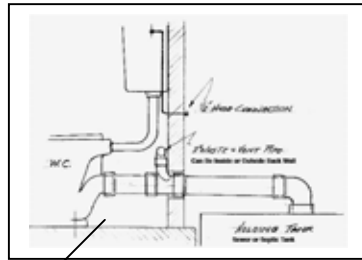
**Porta John Industries, Inc.**  
 Phone: 1-800-521-6310 Fax: 1-800-437-9220  
 E-mail: [info@toilets.com](mailto:info@toilets.com) Web Site [www.toilets.com](http://www.toilets.com)



## All In One Patent #6,721,967



Optional Double Doors



**How It Works**  
Patent #6,721,967



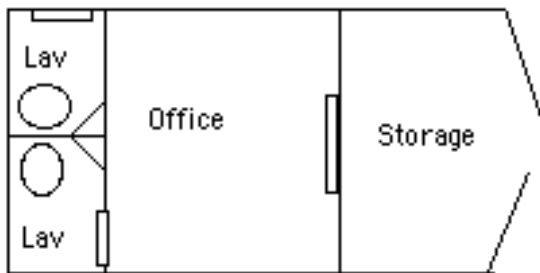
**Porta John Industries, Inc.**  
Phone: 1-800-521-6310 Fax: 1-800-437-9220  
E-mail: [info@toilets.com](mailto:info@toilets.com) Web Site [www.toilets.com](http://www.toilets.com)

## All In One Site Management Solution



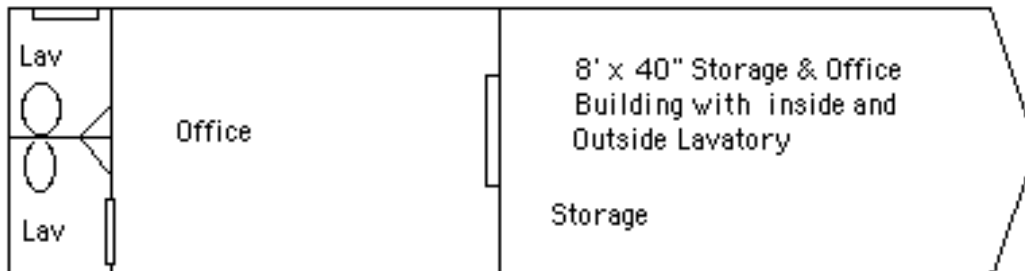
8' x 20 Storage  
Inside and out side Lavatory

### Patent Pending



8' x 20 Storage & Office  
Inside and out side Lavatory

### All Units are Ground Level Fresh Water Flush Systems



8' x 40" Storage & Office  
Building with inside and  
Outside Lavatory  
Storage

**Lavatories can be plumbed to our holding tank, septic system or sewer. Water source can be a garden hose or water tank.**

